

# beautiful specious one bedroom



ID: 94741AV

Ultima actualizare: 24.08.2022

Cartier: Downtown Dubai

Zona: Burj Park

Pret/mp: 6.724€

Rata lunara: 3.383,63 €

685.861€



## Persoana de contact

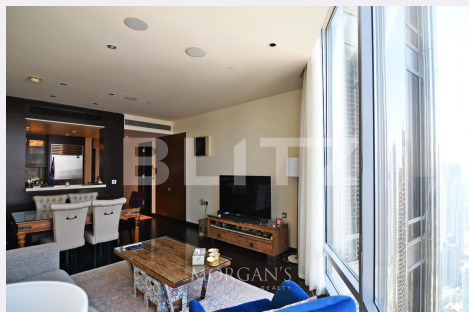
+4 0364 431 176

## Contact agentie

Fix: +4 0364 431 176

Email:

Adresa:



## Caracteristici

Numar camere: Garsonieră

Suprafata utila: 102.00 mp

Numar bai: 2

Nr balcoane:

Etaj: /1

Nr.locuri parcare:

Tip compartimentare:

Vechime apartament:

Tip imobil:

Dotari: Mobilat/utilat

Tip finisaj: Finisat

Material constructie:

# Descriere oferta

Morgan's International Realty is pleased to present this amazing apartment in Burj Khalifa for Sale with a beautiful interior and panoramic skyline view. Property Features: • Valet parking • Concierge service • Tennis court • Indoor/outdoor swimming pool • Jacuzzis • Fitness center • Recreation room for gatherings & events • 24 hours' maintenance • Business center • Security • Communal gardens Burj Khalifa serves as an anchor to the Downtown Dubai community, creating a tangible link between the tower and the community. Downtown Dubai is a multicultural area that brings the best of the Arab and Western worlds together, offering something for everyone. The neighborhood is home to quite a few residential apartment buildings and villas surrounding Burj Khalifa's location. With over 22 million man-hours clocked in and at the time of construction over 12,000 people working daily at any given time, the ginormous tower is known as a 'vertical city' and the name couldn't be more apt, given its magnitude and extravagant mixed-use facilities. It definitely deserves its city status, as it holds at least 10,000 people at any given point in time and can support up to 35,000 people in the building alone. Burj Khalifa boasts 2957 parking spaces, 304 hotel rooms, and 900 apartments.

## Ratingul ofertei

Locatie	☆☆☆☆	0.0
Raport calitate/preț	☆☆☆☆	0.0
Facilitati zona	☆☆☆☆	0.0
Spatii verzi	☆☆☆☆	0.0
Confort	☆☆☆☆	0.0

## Parerea Agentului

## Observatii

---

---

---

---