

High Floor, Full Palm & Sea View, 3 BR



ID: 107950AV

Ultima actualizare: 04.02.2023

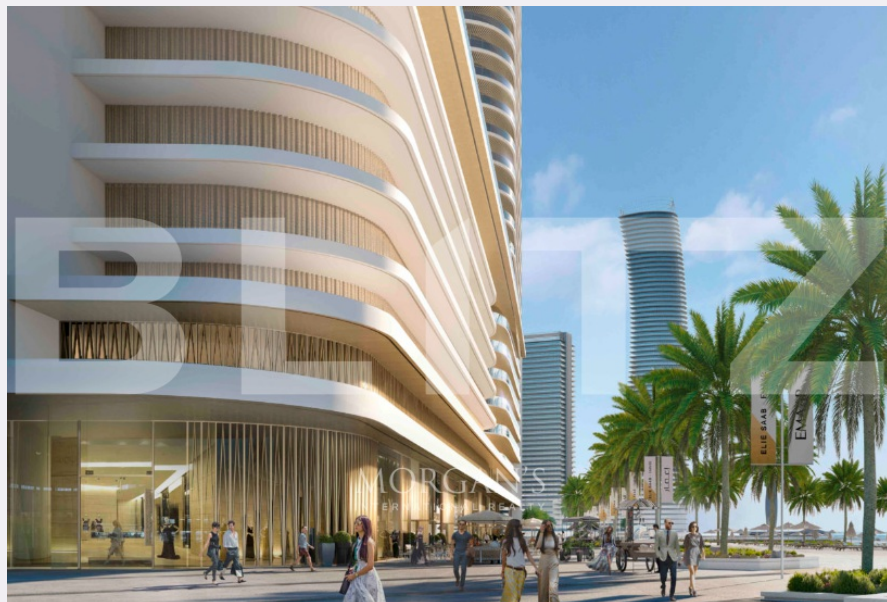
Cartier: Dubai Harbour

Zona: EMAAR Beachfront

Pret/mp: 10.247€

Rata lunara: 9.705,89 €

1.967.383€



Persoana de contact

+4 0364 431 176

Contact agentie

Fix: +4 0364 431 176

Email:

Adresa:



Caracteristici

Numar camere: 3

Suprafata utila: 192.00 mp

Numar bai: 4

Nr balcoane:

Etaj: /1

Nr.locuri parcare: 1

Tip compartimentare:

Vechime apartament:

Tip imobil:

Dotari: Mobilat/utilat

Tip finisaj: Finisat

Material constructie:

Descriere oferta

Morgan's International Realty is pleased to offer this amazing 3 Bedroom beachfront apartment for sale in Grand Bleu Tower interiors by Elie Saab in Emaar Beachfront Dubai Harbour. Private Beach Living. Wake up to breathtaking views of the bay and walk up to the marina to go sailing. Take a swim in the majestic sea or relax by the pool deck as you watch the sun go down. Designed for an elite lifestyle, Grand Bleu Tower caters to your every desire. FACILITIES and AMENITIES: - Elie Saab Furniture Collection - 3 Bedroom Apartment Plus Maid's Room - Built Up Area: 2,072 Sqft - 4 Bathrooms - 2 Covered Parking Spaces - Balcony - Panoramic View of complete Palm Jumeirah & Sea - Waterfront Homes - Access to multiple nearby parks - Gymnasium - Swimming Pool - Kids Play Area - 24hrs Security and CCTV Elie Saab's Haute Couture savoir-faire comes together with Emaar's design prowess for the first time to give you an unparalleled home overlooking the Palm Jumeirah and Arabian Gulf. The architecture evokes Miami's Art Deco District, a slice of South Beach constructed in the 1930s and admired for its graphic lines, glittering accents, and a lifestyle of absolute indulgence. Couturier Elie Saab and Emaar present an exquisite collection of luxury residences. Situated at Dubai's most spectacular beachfront, Grand Bleu Tower is the first Elie Saab designer building in the world. Grand Bleu Tower is set in the heart of EMAAR BEACHFRONT and imbued with Elie Saab's innate elegance. With its sweeping views of the Palm, sea and sky, punctuated only by glimpses of the promenade and nearby parks, the tower is the pinnacle of modern luxury. Every element, from the building's architecture to lobby design, delivers a heightened residential experience.

Ratingul ofertei

Locatie	☆☆☆☆☆	0.0
Raport calitate/preț	☆☆☆☆☆	0.0
Facilitati zona	☆☆☆☆☆	0.0
Spatii verzi	☆☆☆☆☆	0.0
Confort	☆☆☆☆☆	0.0

Parerea Agentului

Observatii
