

# Apartament 4 camere, suprafata 90 mp, zona George Enescu(Sweet Escape)

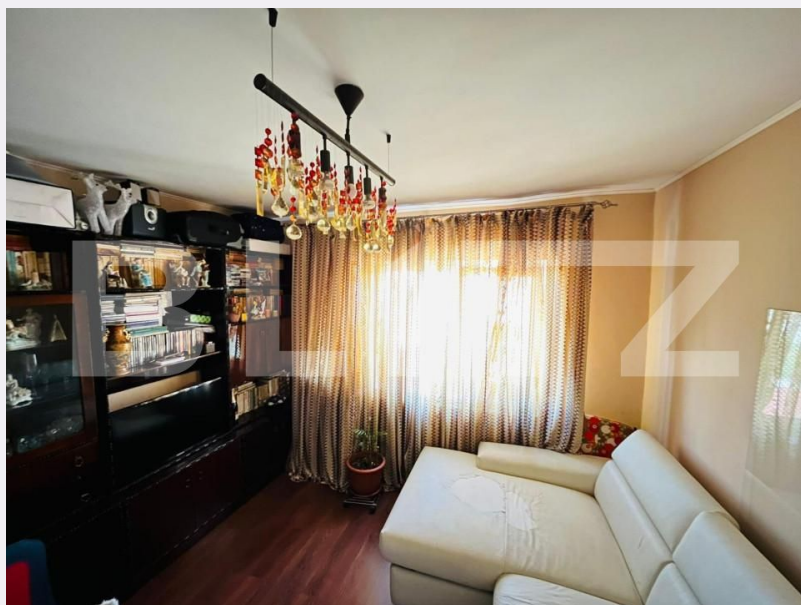
Scan

ID: 143453AV  
Ultima actualizare: 09.05.2024

Cartier: George Enescu  
Zona:

Pret/mp: 1.189€  
Rata lunara: 544,71 €

107.000€



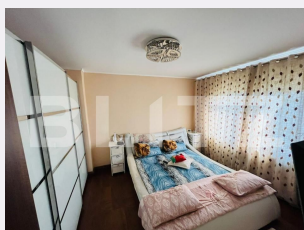
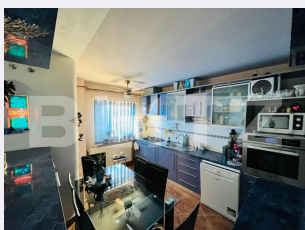
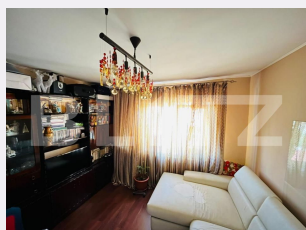
## Persoana de contact

+40351455333  
office@blitz.ro

## Contact agentie

Fix: +40351455333  
Email: office@blitz.ro  
Adresa:

- str. Calea Severinului, nr.13,  
et.1, Craiova



## Caracteristici

Numar camere: 4  
Suprafata utila: 90.00 mp  
Numar bai: 2  
Nr balcoane: 2  
Etaj: 4 /4

Nr.locuri parcare: 1  
Tip compartimentare: Decomandat  
Vechime apartament: Vechi

Tip imobil: Bloc de apartamente  
Dotari: Parțial mobilat/utilat  
Tip finisaj: Finisat  
Material constructie:

# Descriere oferta

Blitz ofera spre vanzare apartament 4 camere decomandat trilateral, suprafata utila 90mp +6mp balcoane, compus din 2 bai, bucatarie plus living, 3 dormitoare, 2 balcoane, plus boxa subsol de 6 mp. Imobilul, se vinde partial mobilat si utilat cu electronice, electrocasnice, aer conditionat, centrala termica (instalatie termica din cupru). Tamplarie Pvc cu geam termopan, tocarie interioara din lemn, renovat in urma cu 7 ani (instalatie sanitara, electrica). Zona este foarte linistita, acces loc de parcare, la 15 minute de centru. In proximitate Liceul de chimie, scoala 12, Auchan, Suppeco, Lidl, locuri de joaca pentru copii. Cod ofertă / ID BLITZ: P8073

## Ratingul ofertei

0.0

## Parerea Agentului

Locatie	☆☆☆☆☆	0.0
Raport calitate/preț	☆☆☆☆☆	0.0
Facilitati zona	☆☆☆☆☆	0.0
Spatii verzi	☆☆☆☆☆	0.0
Confort	☆☆☆☆☆	0.0

## Observatii

---

---

---

---